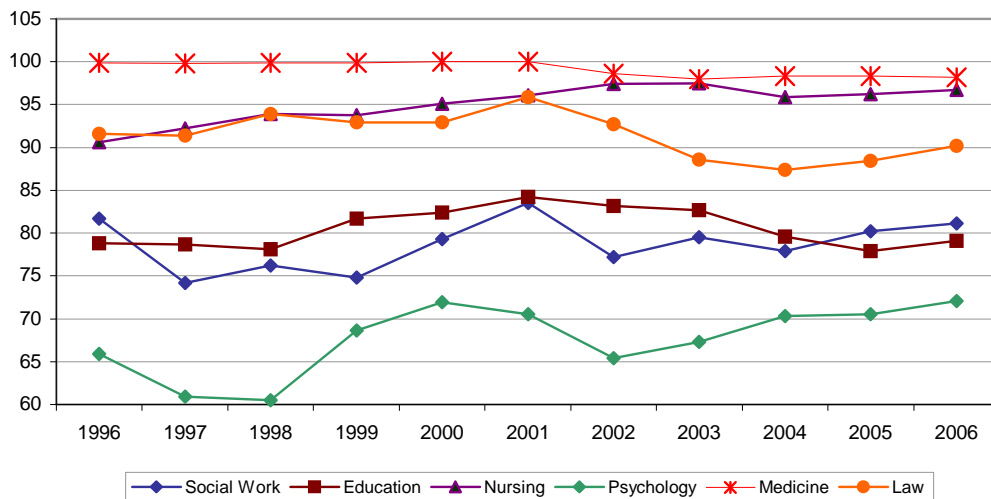




GradStats is produced annually by the Graduate Careers Council of Australia. The publication is a study of the activities of new university graduates around four months after the completion of their qualifications. The year of publication reflects statistics for the previous academic year (eg the 2006 publication reflects end of year statistics for students graduating in 2005).

As Figure 1 and Table 1 indicate, nursing graduates compare favourably in obtaining full time employment following graduation.

Figure 1: Bachelor Degree Graduates Full Time Employment Outcomes



Graduate Careers Council of Australia *GradStats* 2006; 2005; 2004; 2003; 2002; 2001;2000;1999;1998;1997;1996 (www.gradlink.edu.au)

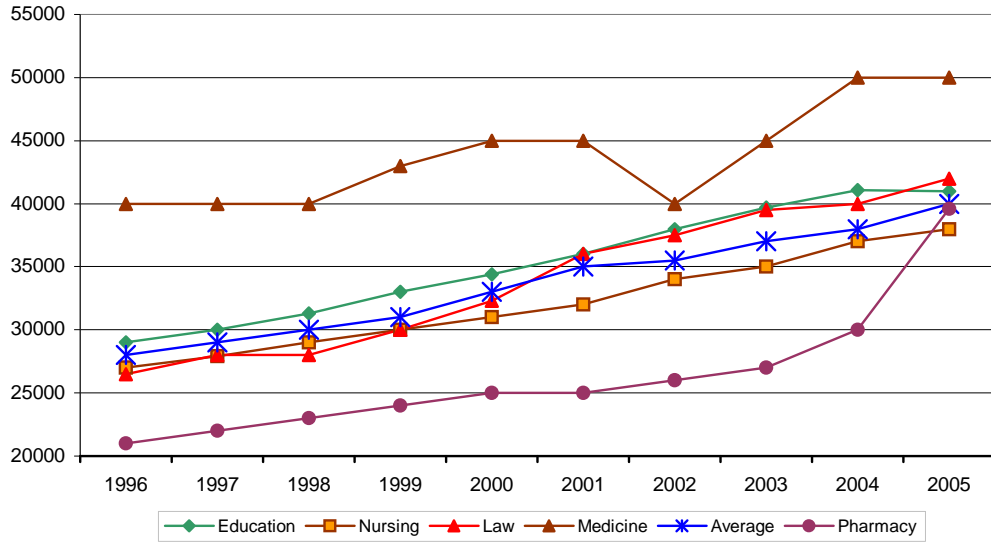
Table 1: Bachelor Degree Graduates Full Time Employment Outcomes

Field	1996	1997	1998	1999	2000	2001	2002	2003	2004	2005	2006
Psychology	65.9	60.9	60.5	68.6	71.9	70.5	65.4	67.3	70.3	70.5	72.1
Social Work	81.7	74.2	76.2	74.8	79.3	83.5	77.2	79.5	77.9	80.2	81.1
Education	78.8	78.7	78.1	81.7	82.4	84.2	83.2	82.7	79.6	77.9	79.1
Nursing	90.6	92.2	93.9	93.8	95.1	96.1	97.4	97.5	95.9	96.2	96.7
Medicine	99.9	99.8	99.9	99.9	100.0	100.0	98.6	98.0	98.3	98.3	98.2
Law	91.6	91.4	93.9	92.9	92.9	95.9	92.7	88.6	87.4	88.4	90.2
Dentistry	93.2	88.4	90.9	93.4	95.9	94.2	97.5	94.2	97.0	95.0	97.3
Pharmacy	96.4	96.0	98.5	96.8	97.6	99.6	100.0	99.5	99.1	98.7	99.4

Graduate Careers Council of Australia *GradStats* 2006; 2005; 2004; 2003; 2002; 2001;2000;1999;1998;1997;1996 (www.gradlink.edu.au)

As demonstrated in Figure 2 and Table 2, nursing is below the average mean starting salaries however, as well as being below most other comparable professional groups.

Figure 2: Bachelor Degree Graduates Mean Starting Salaries



Graduate Careers Council of Australia *GradStats* 2006; 2005; 2004; 2003; 2002; 2001;2000;1999;1998;1997;1996 ([www.gradlink.edu.au](http://www.gradlink.edu.au))

Table 2: Bachelor Degree Graduates Mean Starting Salaries

Field	1996	1997	1998	1999	2000	2001	2002	2003	2004	2005	2006
Psychology	27000	28000	28300	28500	32000	33000	34000	35000	39000	40000	40000
Social Work	28900	30000	30600	31700	33700	35000	35000	37200	38300	43000	43000
Education	29000	30000	31300	33000	34400	36000	38000	39700	41100	41000	41000
Nursing	27000	27900	29000	30000	31000	32000	34000	35000	37000	38000	39000
Medicine	40000	40000	40000	43000	45000	45000	40000	45000	50000	50000	50000
Law	26500	28000	28000	30000	32300	36000	37500	39480	40000	42000	42000
Dentistry	40000	46000	43000	42300	50000	46400	52000	55000	62000	61000	61000
Pharmacy	21000	22000	23000	24000	25000	25000	26000	27000	30000	39600	39600
Average	28000	29000	30000	31000	33000	35000	35500	37000	38000	40000	40800

Graduate Careers Council of Australia *GradStats* 2006; 2005; 2004; 2003; 2002; 2001;2000;1999;1998;1997;1996 ([www.gradlink.edu.au](http://www.gradlink.edu.au))

Australian Nursing Federation *PayCheck*