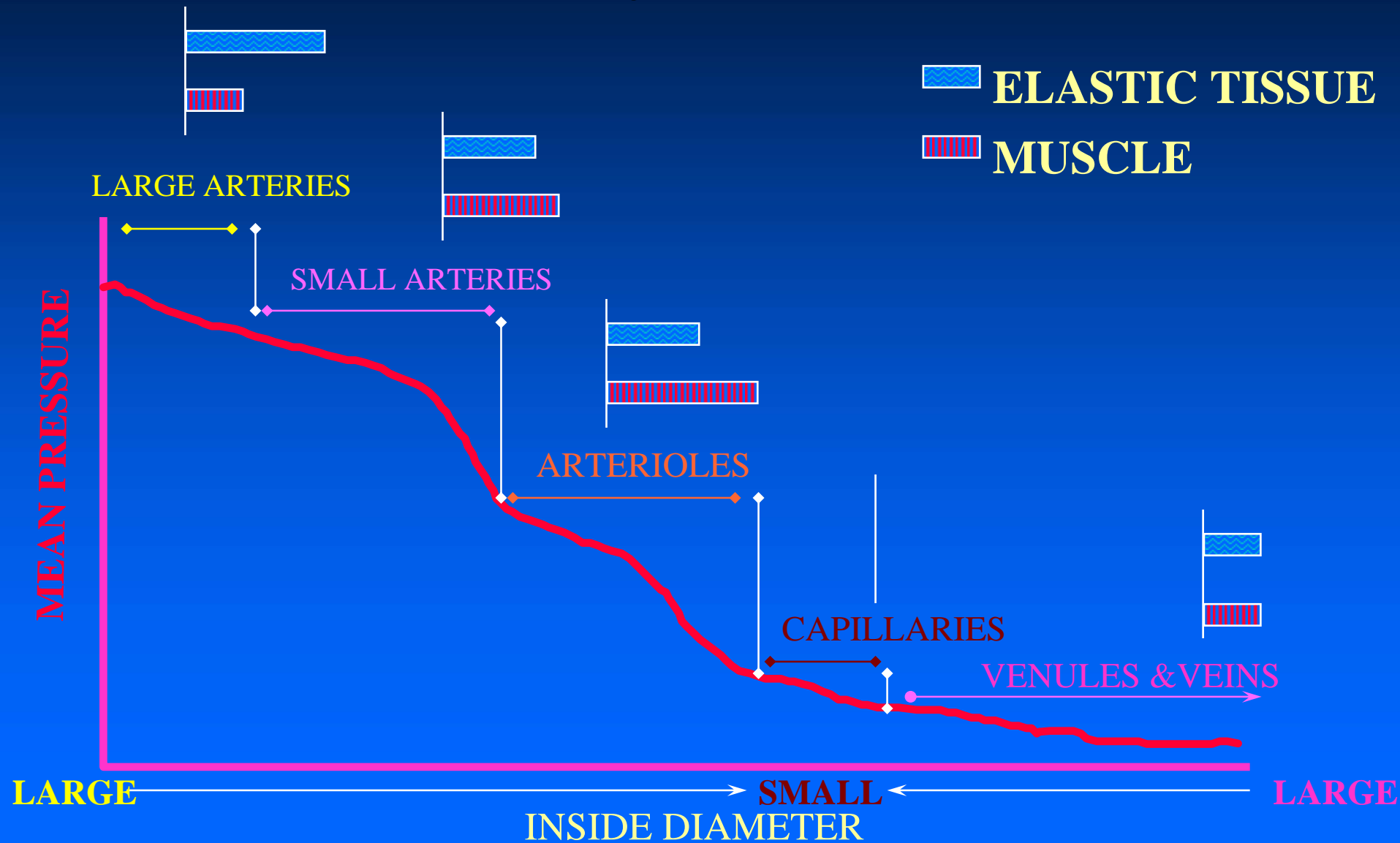


# Pressure Drop in the Vascular System



# Distribution of Blood in the Circulatory System

- 67% IN THE SYST. VEINS/VENULES
- 5% IN THE SYSTEMIC CAPILLARIES
- 11% IN THE SYSTEMIC ARTERIES
- 5% IN PULMONARY VEINS
- 3% IN PULMONARY ARTERIES
- 4% IN PULMONARY CAPILLARIES
- 5% IN HEART ATRIA/VENTRICLES



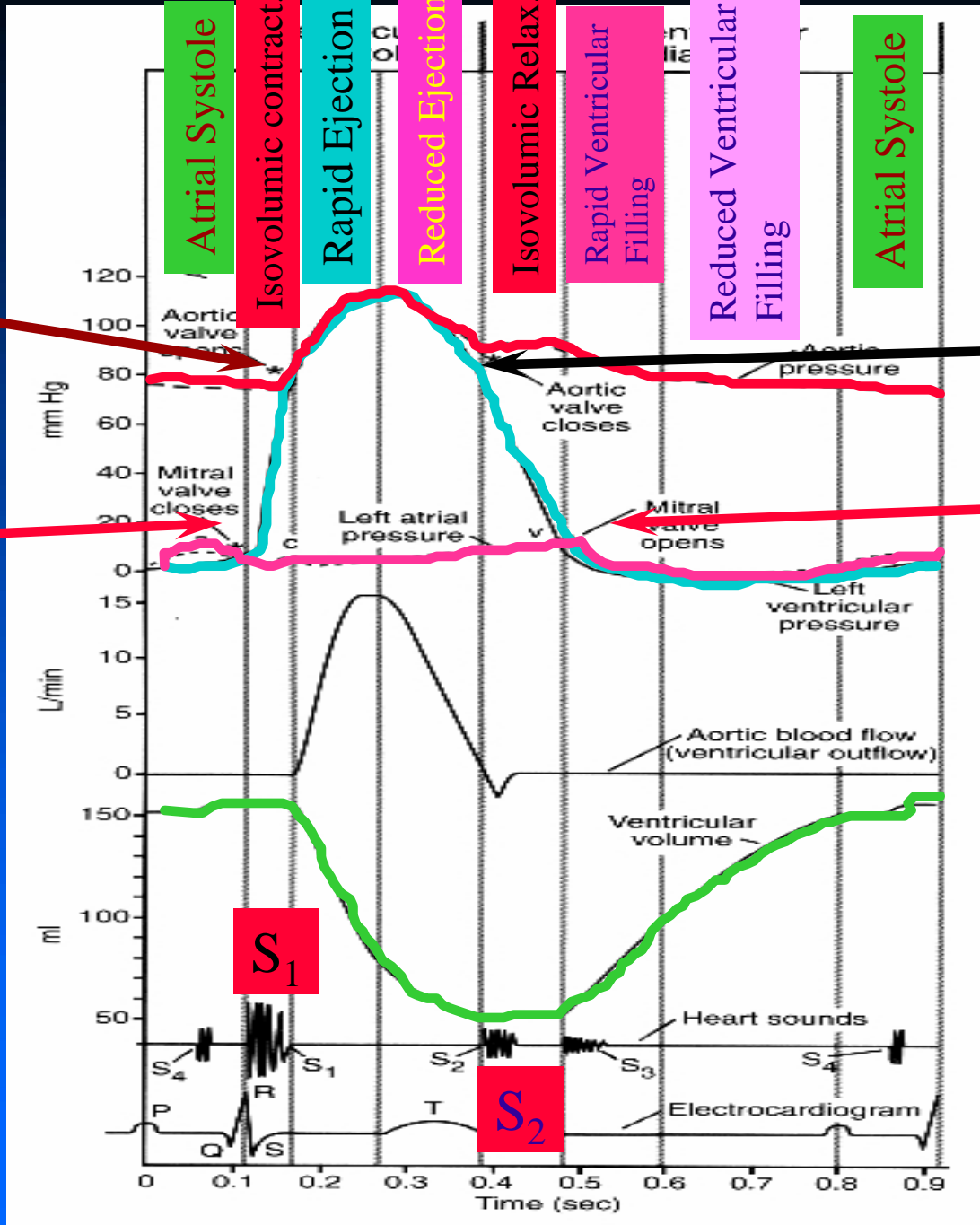
Aortic opens

Mitral Closes

Aortic closes

Mitral opens

# CARDIAC CYCLE

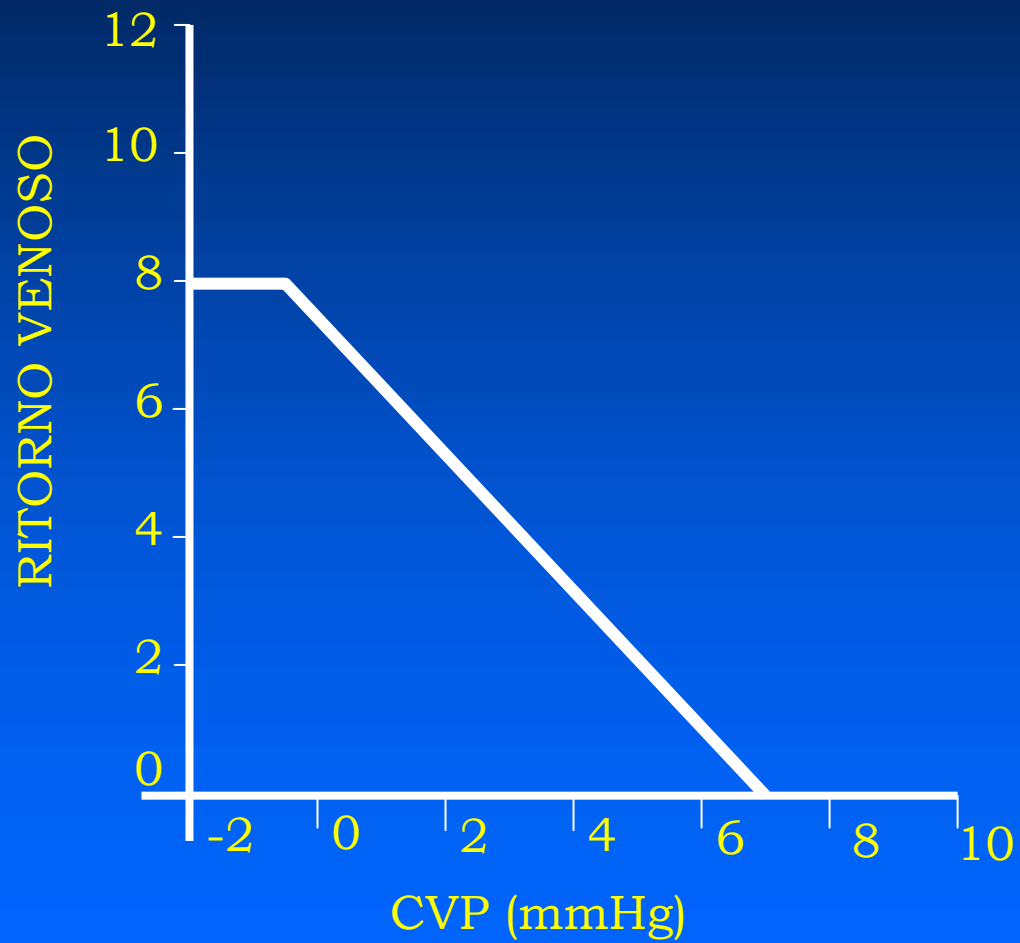


# Quali sono i determinanti della gettata cardiaca

- Ritorno venoso
- Efficienza contrattile ovvero la capacità del cuore di pompare il sangue

# Ritorno venoso

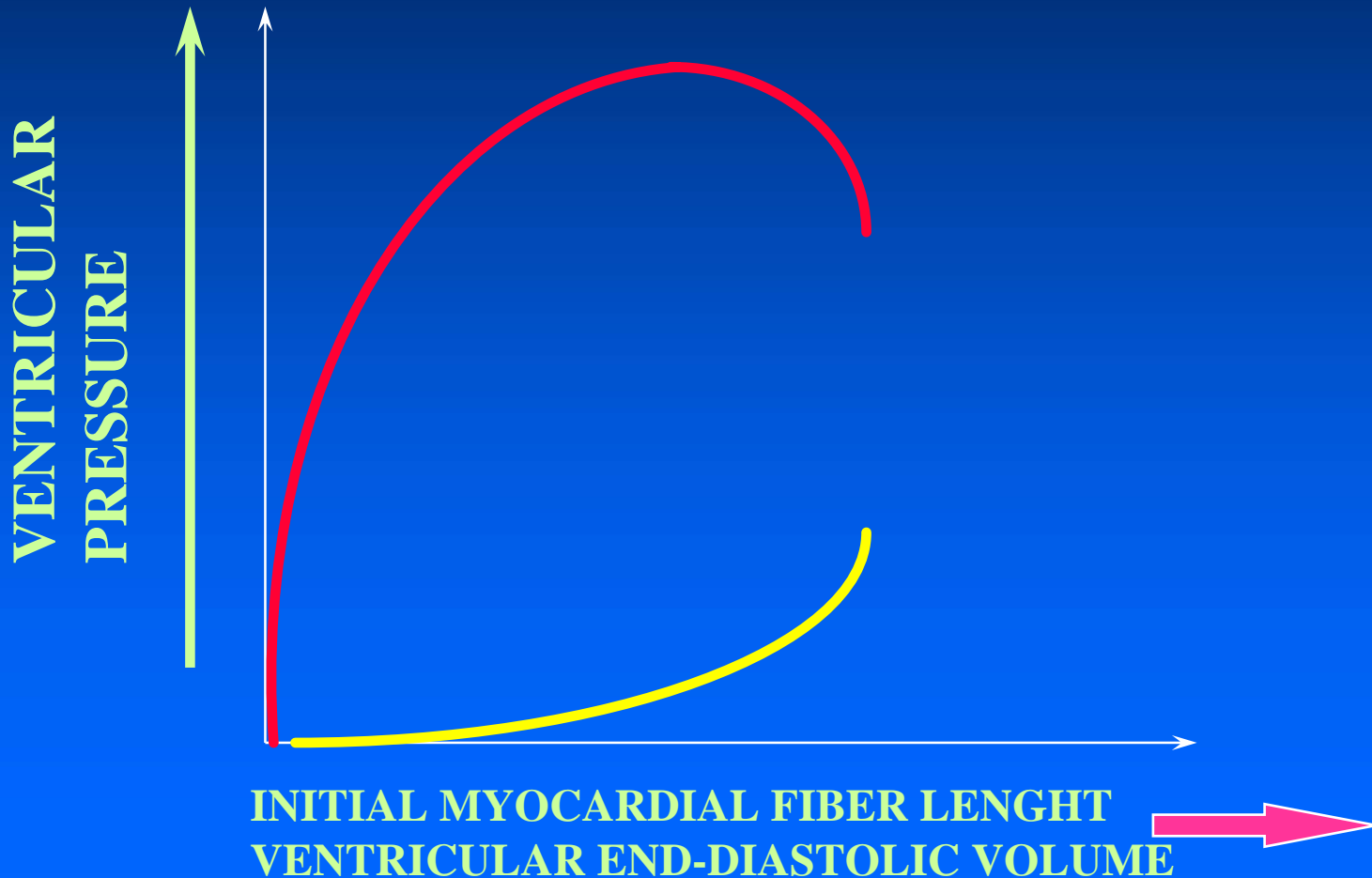
- Pressione atrio destro
- Grado di riempimento del distretto vascolare sistemico
- Resistenza al flusso sanguigno



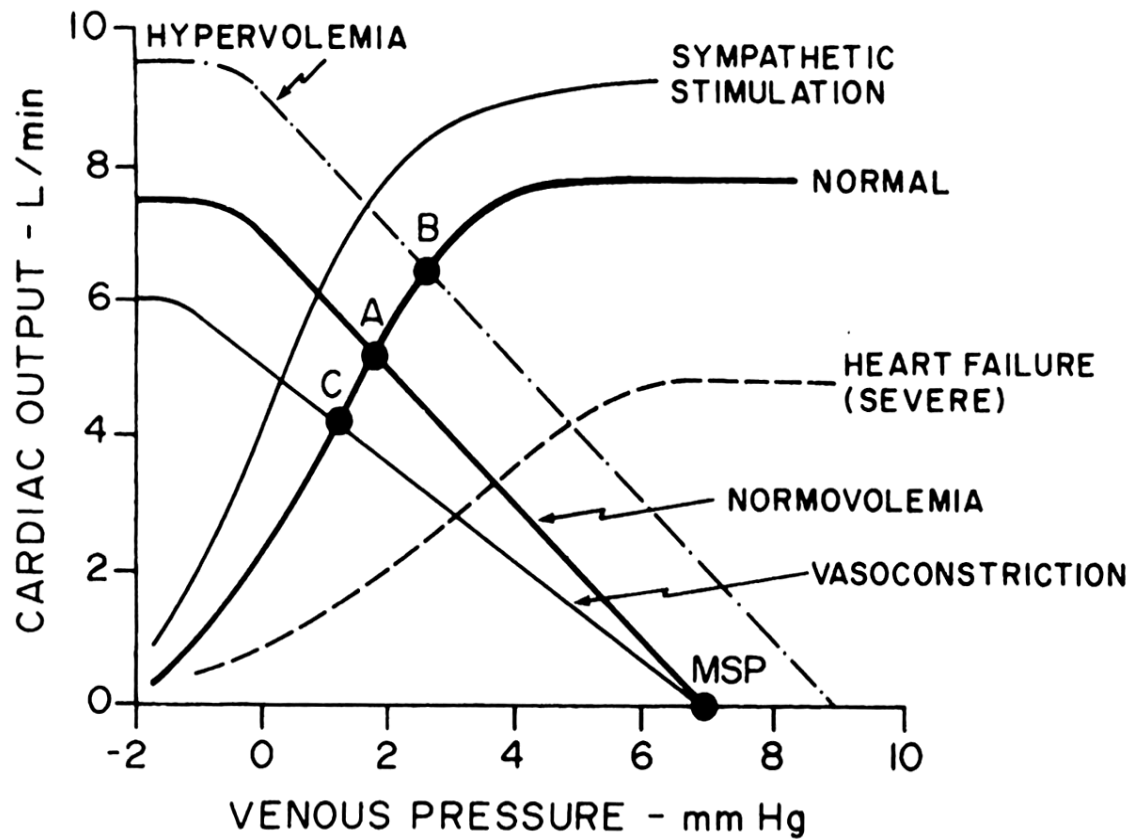
# Efficienza della funzione di pompa

- Preload
- Contrattilità
- Afterload

# LENGTH/ TENSION AND THE FRANK-STARLING RELATION







J.J.Marini and A.P.Wheeler: Critical Care Medicine, the essentials